



live your
Dreams

contact@supercityproject.com
+91 90999 77909

www.supercitylife.com

Welcome to your Dream!





People say dreams aren't real because they do not contain matter & substance. It's immensely overwhelming to come to a conclusion – knowing that they are for real. SuperCity's Dream is all that you have dreamt about, it's like holding your dream in your hands, feeling the substance – the thick walls, the bliss of life, the touch of elegance, the fragrance of perfection and the aura of living a dream life.

These 4 BHK bungalows are your dreams come true.



your dream home in the world of dreams...











turning dreams into reality







Site Layout



amenities



landscaped garden



swimming pool & kids pool



fully equipped gymnasium



volleyball court & half basketball court



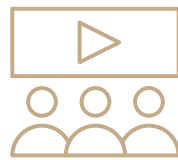
power back up for common amenities



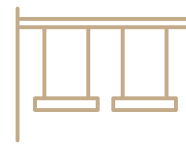
pleasant sit outs



indoor games



mini home theatre



children's play area



yoga deck



painting your every dream!





UNIT **a** **Dream**

Ground Floor



First Floor



Second Floor





UNIT **b** **Dream**

Ground Floor



First Floor



Second Floor



Specification

- FLOORING
- Living / Drawing - Premium vitrified tiles
 - Bedroom - Wooden flooring in one master bedroom & Vitrified tiles in other bedrooms
 - Kitchen - Vitrified tiles flooring
 - Granite platform with S.S. sink with drain board
 - Ceramic tiles above platform up to lintel level
 - Kota stone shelves in store room
 - Kota stone floor in wash area
 - Balcony / Terrace - Rustic tiles

- DOORS
- Main Door - Polished natural veneer with night latch
 - Other Doors - Polished flush doors

- WINDOWS
- Anodized aluminum sliding windows with revil

- TOILETS
- Ceramic tiles up to lintel level
 - Hot & Cold water supply line
 - High quality plumbing fixtures & sanitary wares

- ELECTRIFICATION
- 3 phase concealed ISI copper wiring with Modular switches
 - M.C.B. Distribution panel.
 - A.C., TV & Telephone points

- COLOUR
- Internal : Putty finish
 - External : 100% acrylic paint

- SECURITY
- CCTV surveillance through out the society, Intercom facilities

Disclaimer

Within the permissible law the developers reserve the right to change or revise the scheme or any other details at their sole discretion.

Commencement and timely execution of the project is subject to all necessary approvals from relevant government authorities.

Government levies like stamp duty, registration charges and other legal expenses like AUDA, GEB charges Service Tax / GST etc. are to be borne by the purchaser.

The brochure is not to be treated as part of the legal document it is only for easy viewing and understanding of the project.

The dimensions shown in the brochure are approximate.



