



SITE ADDRESS

"SUPERCITY", Bhadaj - Dental College Road, Near Science City, Ahmedabad 382 115
contact@supercityproject.com | supercitylife.com | +91 90999 77909

MEMORY +91 79 4002 4000





A LEGACY OF REALTY EXCELLENCE AESTHETIC INTEGRITY COUPLED WITH INNOVATIVE THINKING-

These are supporting columns of our design process and the plinth of every endeavor that we undertake. Famed as elite jewelers for over 35 years, we have carried forward our legacy and deep rooted understanding of aesthetics into the realm of real estate. That's why, our designs more crafted than plotted, bringing together a unique blend of architectural excellence and human sensibility. We are driven by the perseverance of diverse professionals working with us, but we are powered by the zest to give shape and structure to the dreams of our clients.

Supercity is our vision of art by design. From the beginning, we wanted to create warm and inviting homes. By taking a step back, and really looking at the process from up above, we were able to re-imagine Supercity as a luxury living experience, furnished with lavish spaces, equipped with modern amenities and decked lush landscapes. Both inside and out, Supercity has been designed by us with passion and precision and is the epitome of ergonomic and thoughtful creative process.



THE SUPERIOR LIFE

project by Shrinivas Organisers Private Limited

SUPERCITY – LIVING, REIMAGINED

It's that **PERFECT LIFESTYLE** you've been seeking for to settle with your family. Nestled in a **LUSH ECOSYSTEM**, it has the haute couture of **LUXURY** combined with a tag of **'TOP VALUE'** per every square inch of its **SPRAWLING ACRES**. Warm, inviting and full of the finest amenities of the modern world, it offers you the kind of indulgence you can relax in or open up to. And even better, it's only a short drive or a pleasant walk away from everything you need....

For some it's the right place to enjoy the moments that matter, for others it's the perfect venue to make memories that will last a lifetime.....**WELCOME TO THE SUPERCITY.....LIVING, REIMAGINED!**



PRIDE
3 & 4 BHK LUXURIOUS BUNGALOWS

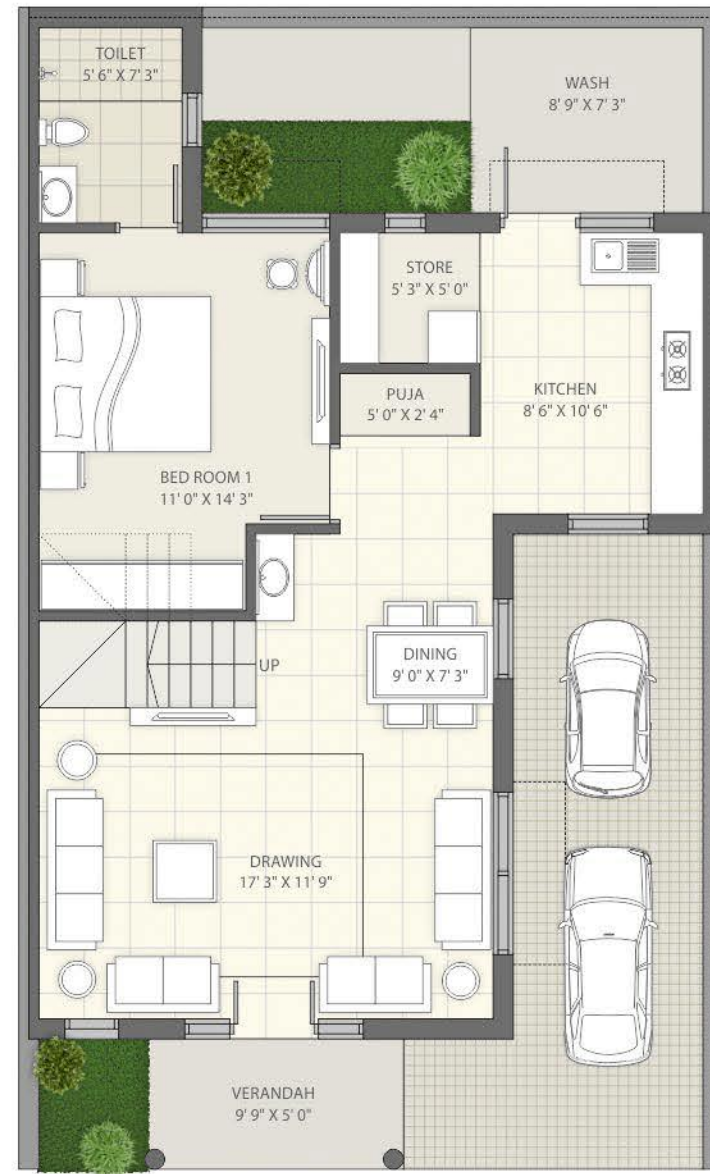
Enter Excellence

Up a paved driveway, and through its elegant entrance facade, awaits a world that has been designed to suit modern day living. A lush landscape covers the open spaces, cascaded with floral plantations and dedicated play areas. It is place where there is something for every generation. From clubhouses, to children's park, to casual sitouts, Pride is in true sense a reimagination of living experience.

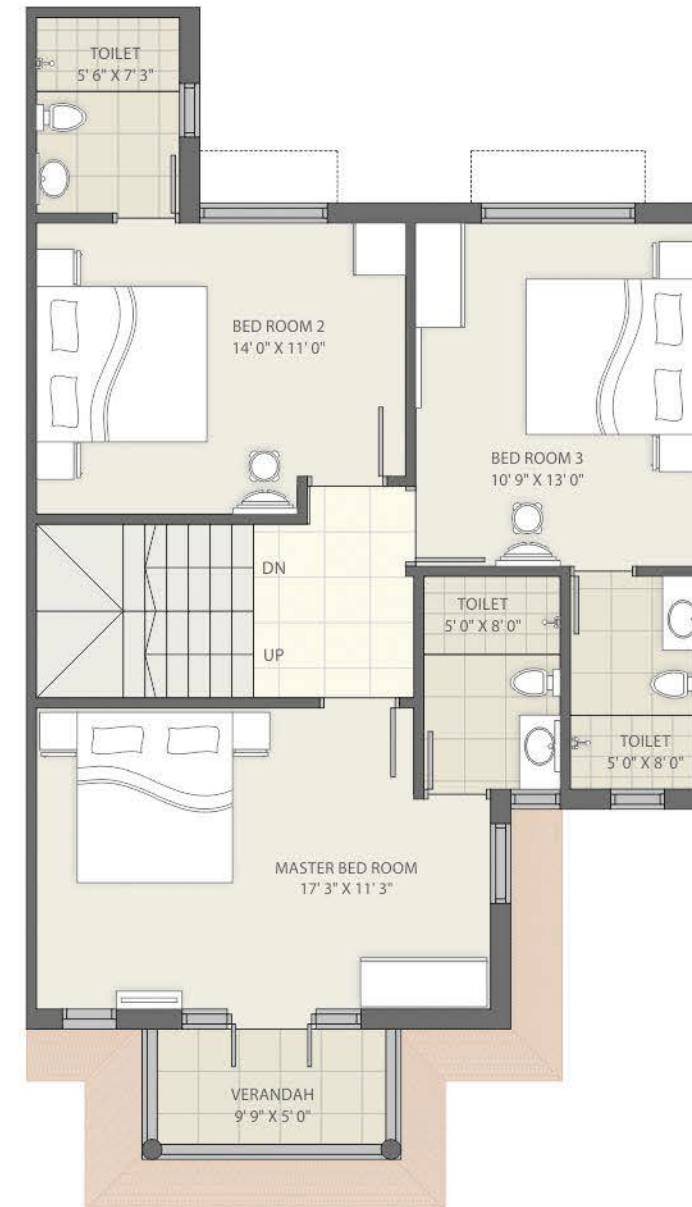




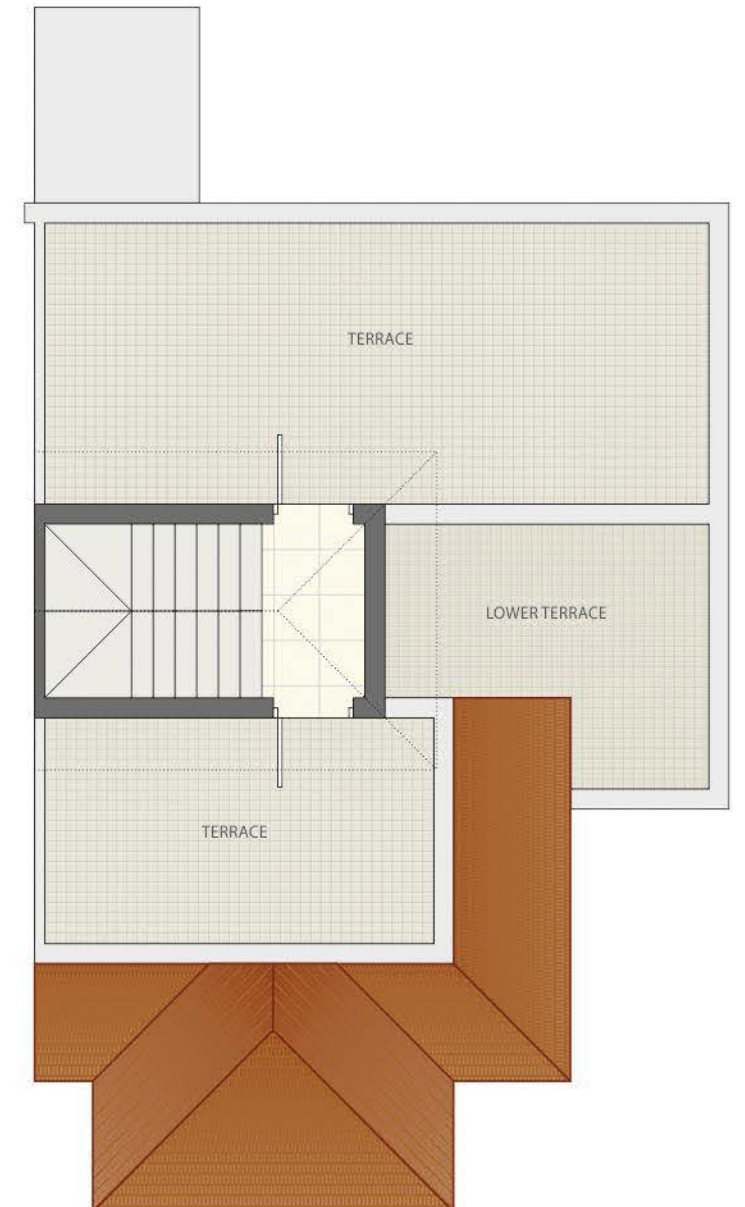
GROUND FLOOR



FIRST FLOOR



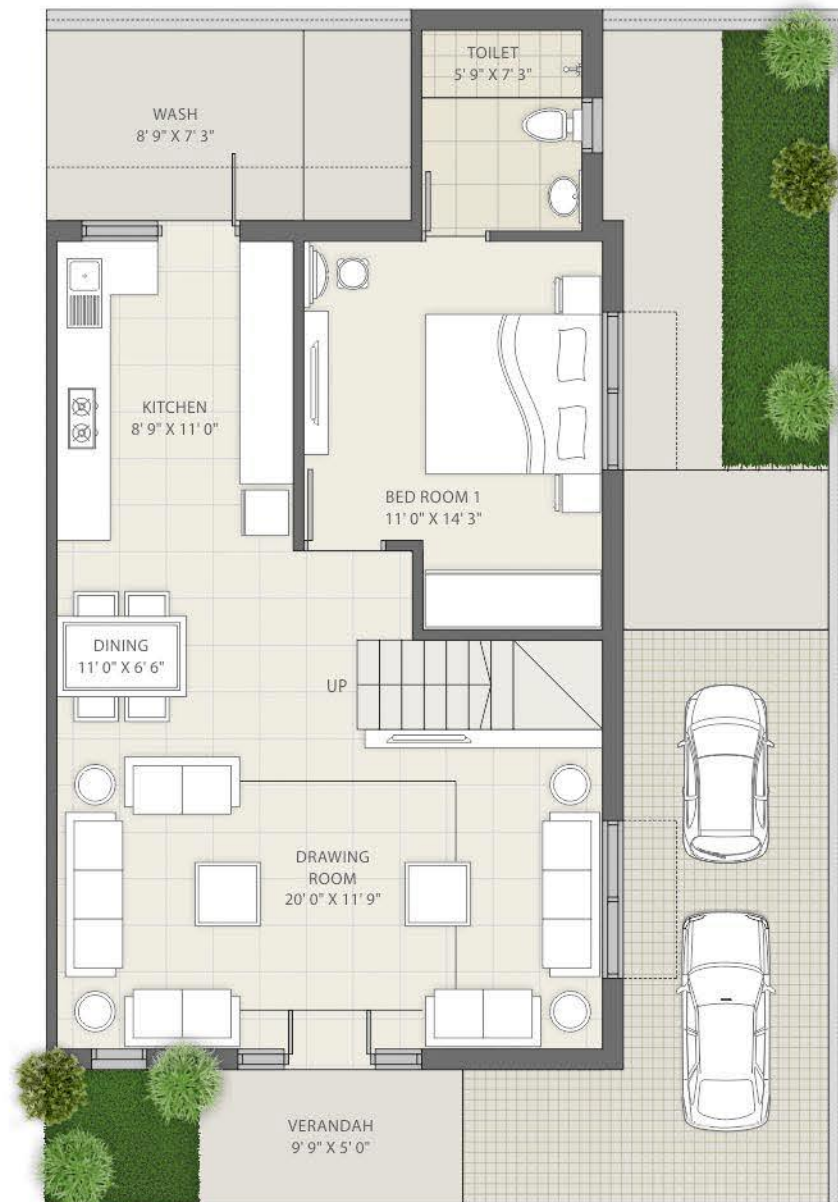
SECOND FLOOR



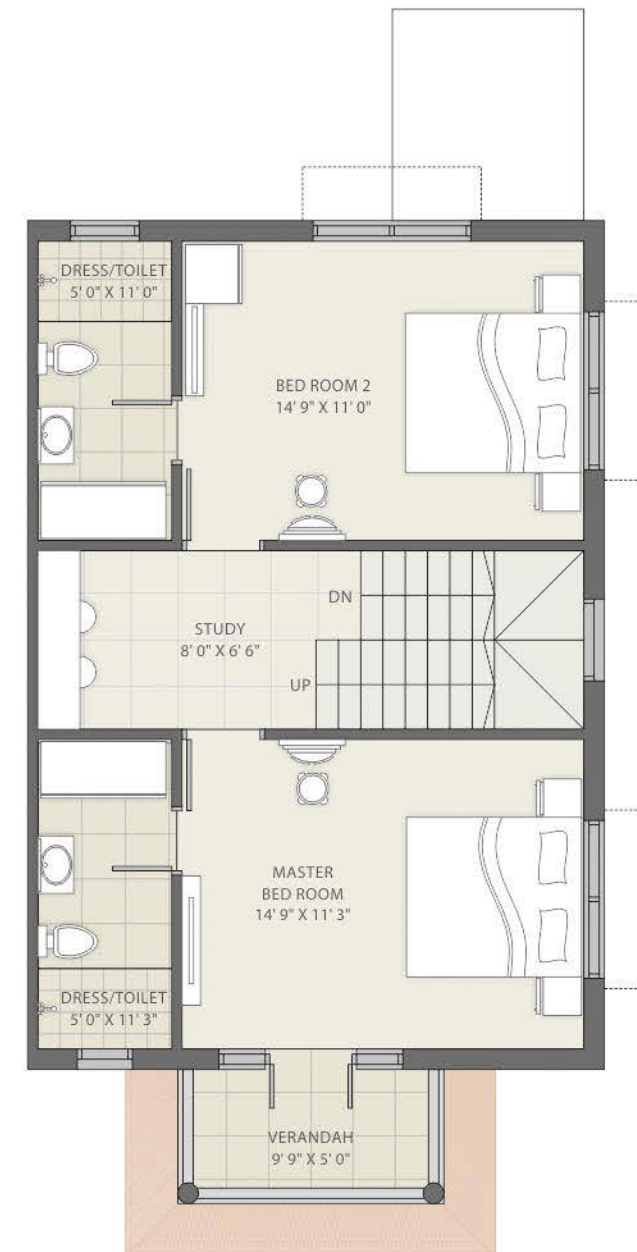
PRIDE TYPE B



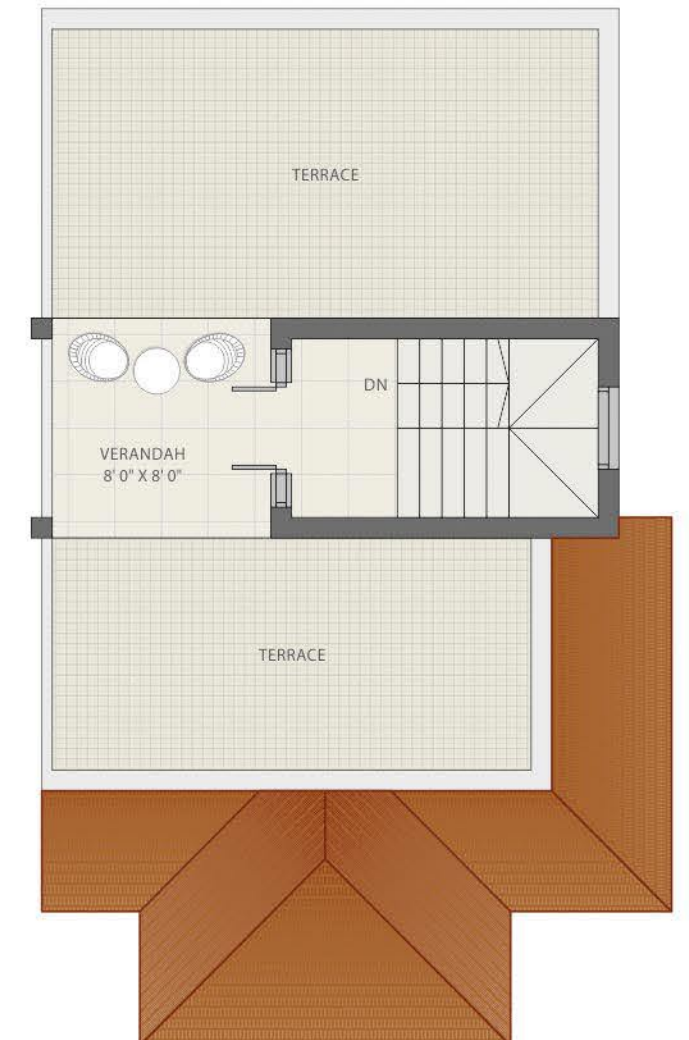
GROUND FLOOR



FIRST FLOOR



SECOND FLOOR



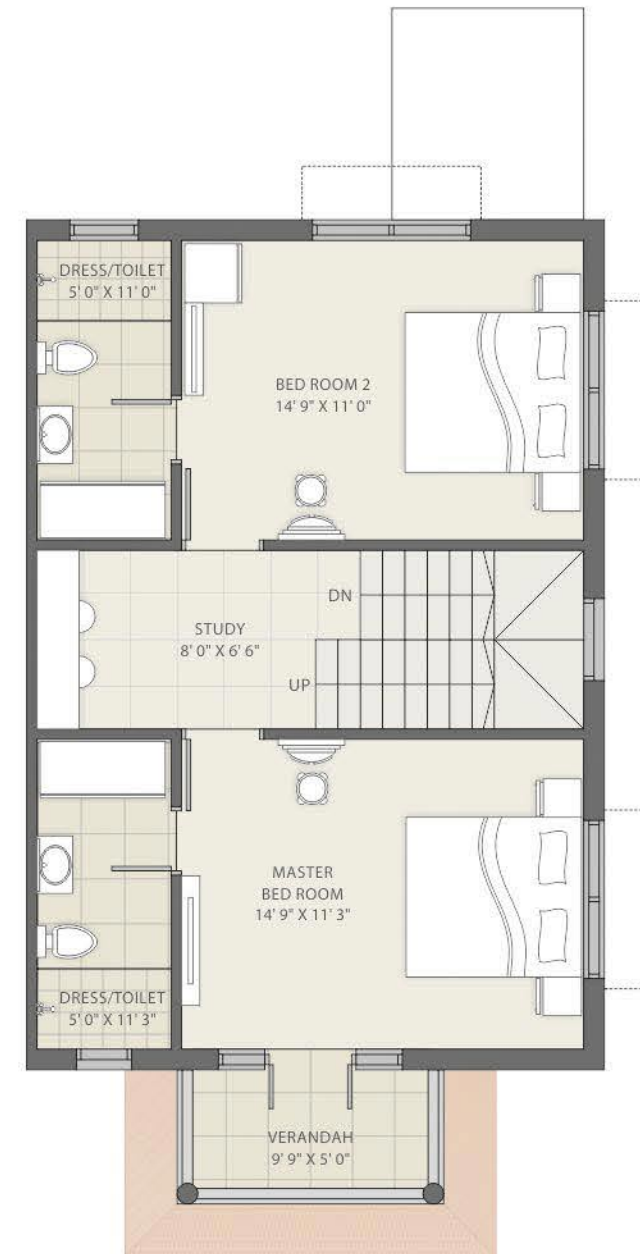


PRIDE TYPE **B1**

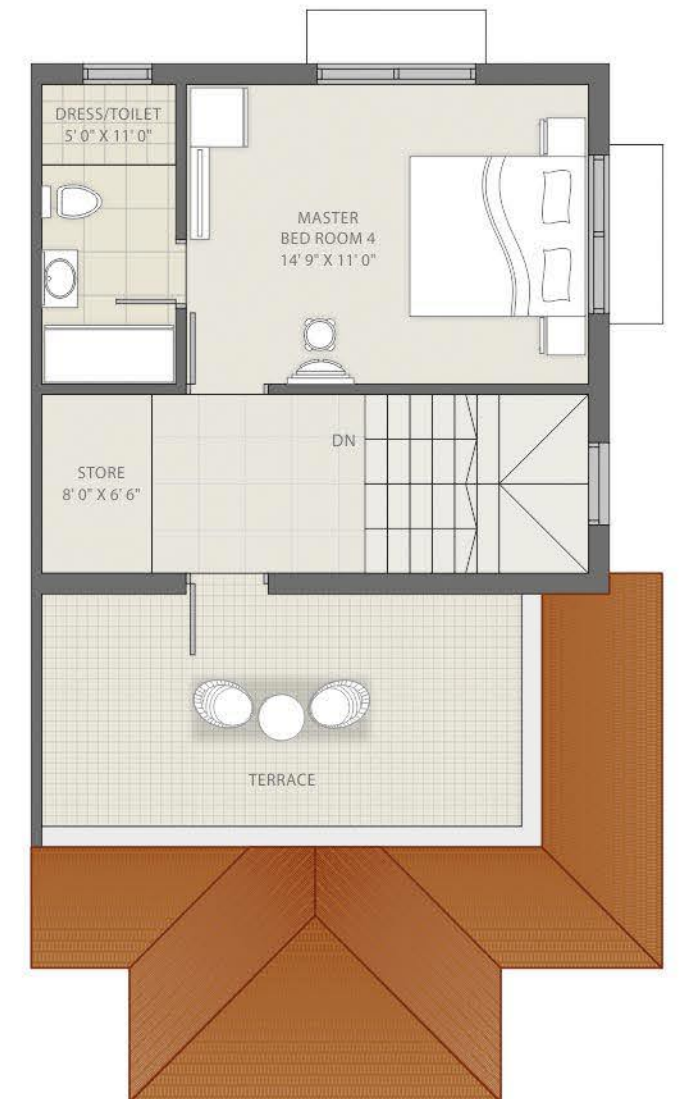
GROUND FLOOR



FIRST FLOOR



SECOND FLOOR





PRIDE
3 & 4 BHK LUXURIOUS BUNGALOWS

15 M WIDE ROAD

TOWARDS ISCON TEMPLE

18 M WIDE ROAD

TOWARDS SCIENCE CITY CIRCLE



A

109 - 117
120 - 128
131 - 139
142 - 150

B

108
118 - 119
129 - 130
140 - 141
151

B1

1
08 - 09
17 - 18
26 - 27
34
51 - 52
54 - 55
77 - 78
92 - 93
107

C

02 - 07
10 - 16
19 - 25
28 - 33
79 - 91
94 - 106

C1

35 - 50
56 - 76

53

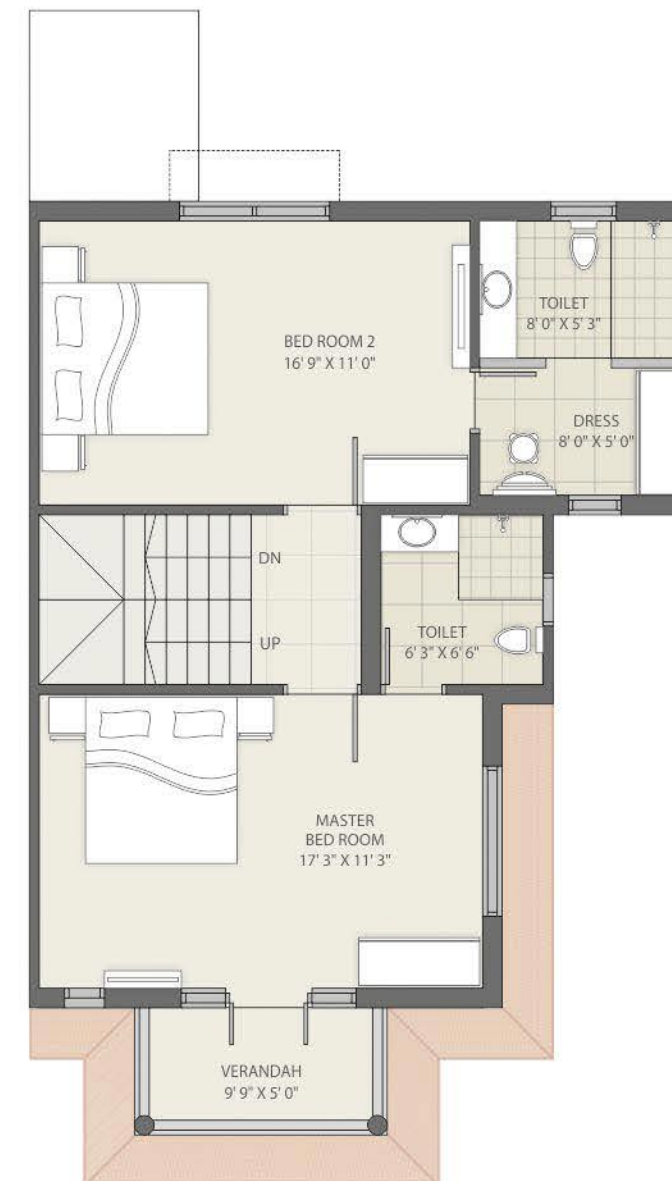




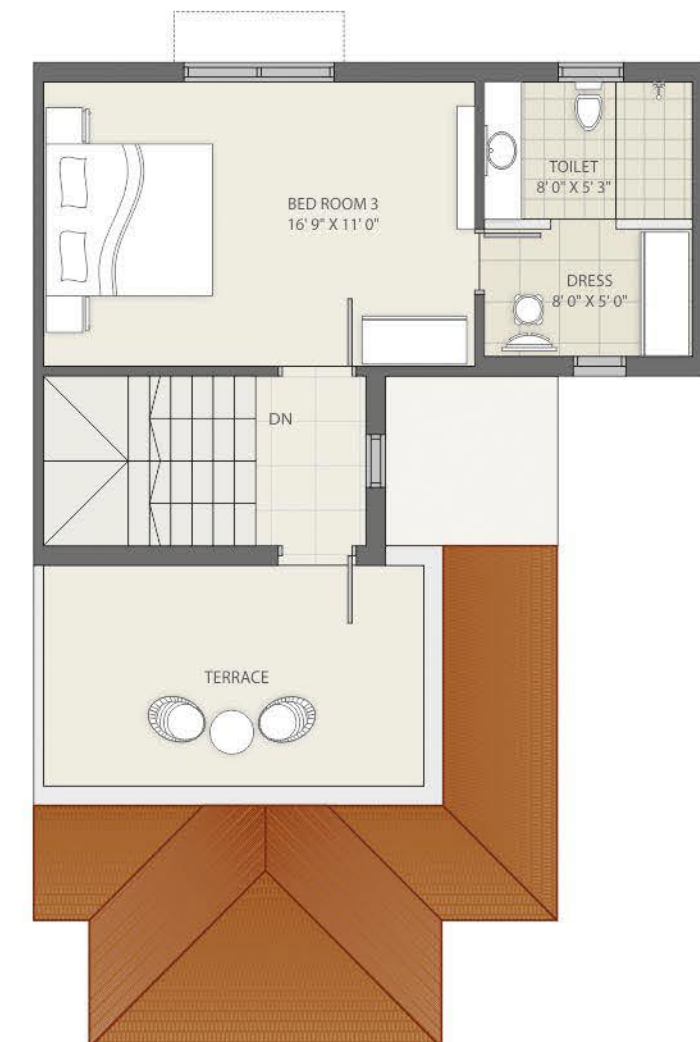
GROUND FLOOR



FIRST FLOOR



SECOND FLOOR



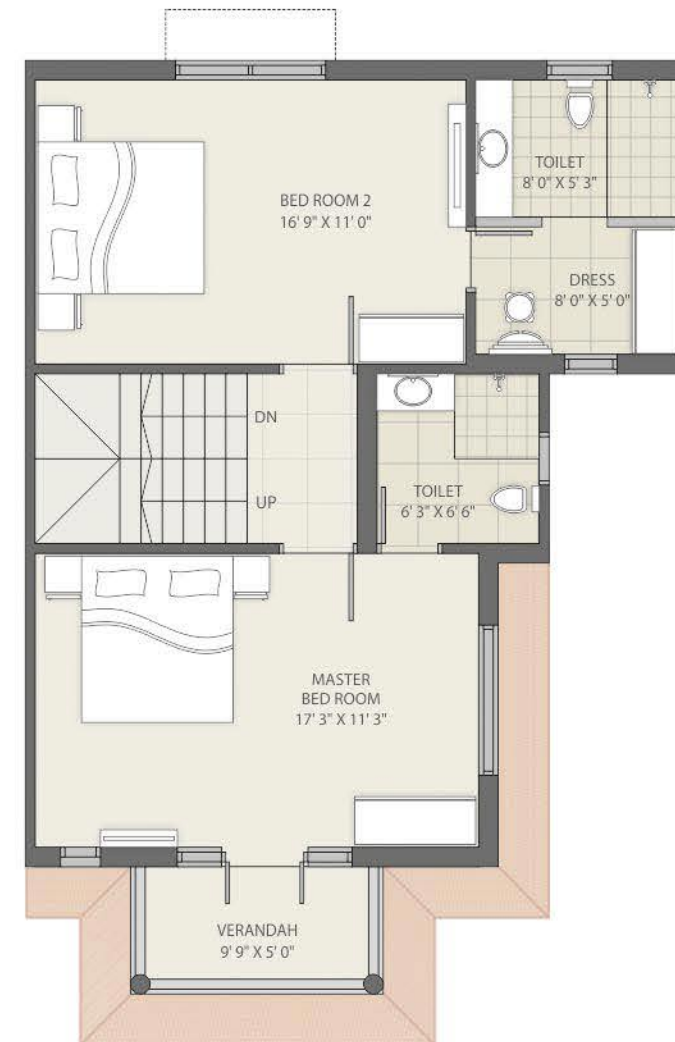
PRIDE TYPE C 1



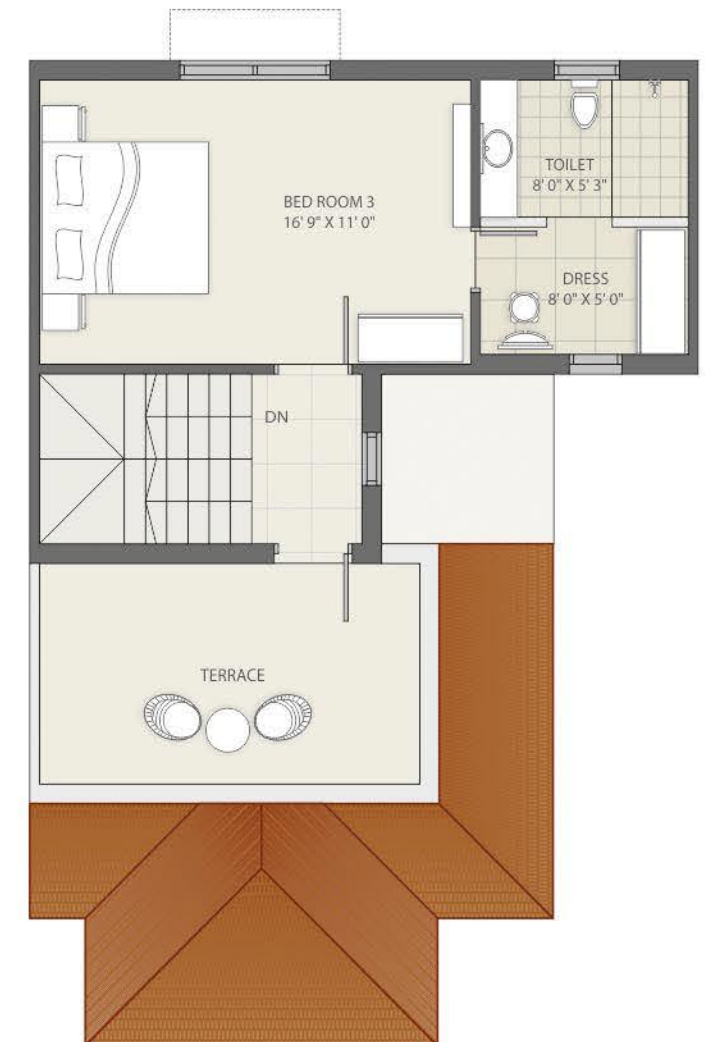
GROUND FLOOR



FIRST FLOOR



SECOND FLOOR





AMENITIES



EXQUISITE
LANDSCAPED GARDEN



CHILDREN'S PLAY AREA



WATER BODIES, LOTUS POND
PLEASANT SIT OUTS



CLUB HOUSE WITH FULLY EQUIPPED
GYMNASIUM & STEAM ROOM



MULTIPURPOSE ACTIVITIES
ROOM & INDOOR GAMES



YOGA DECK



INDOOR
HOME THEATRE



SWIMMING POOL &
KIDS POOL



VOLLEYBALL COURT,
HALF BASKETBALL COURT



DG BACK UP SYSTEM FOR
COMMON AMENITIES





SPECIFICATIONS

FLOORING

LIVING / DRAWING	Premium vitrified tiles
BED ROOM	Wooden flooring in one master bedroom & vitrified tiles in other bedrooms
KITCHEN	Vitrified tiles flooring Granite platform with s.s. Sink with drain board Glazed tiles above platform up to lintel level Kota stone shelves in store room Kota stone floor in wash area
BALCONY / TERRACE	Rustic tiles

DOORS

MAIN DOOR	Main door polish natural veneer with night latch
OTHER DOORS	Other doors coloured flush doors

WINDOWS

TOILETS

	Glazed / ceramic tiles upto lintel level Hot & cold water supply line High quality plumbing fixtures & sanitary wares
--	-----------------------------------------------------------------------------------------------------------------------------

ELECTRIFICATION

	3 phase concealed ISI copper wiring with Moduler switches, M.C.B. Distribution panel, A.C., TV & telephone points
--	-------------------------------------------------------------------------------------------------------------------------

COLOUR

	Internal putty finish External 100% acrylic paint
--	------------------------------------------------------

SECURITY

	CCTV surveillance through out the society, Intercom facilities
--	-------------------------------------------------------------------

Disclaimer

- Within the permissible law and limit the developers reserve the right to change the specification etc.



LOCATION MAP



DISTANCE by



- 1 MIN - Anand Niketan School
- 2 MIN - Isckon Temple Akshaya Patra
- 2 MIN - Ahmedabad Dental College
- 3 MIN - Calorx Olive International School
- 6 MIN - S.P. Ring Road
- 6 MIN - Science City
- 10 MIN - CIMS Hospital
- 10 MIN - S.G. Highway



ACCESS the key to comfort

WARMTH OF A HOME CONVENIENCE OF TOWN

SERENITY OF NATURE AMENITIES OF A CITY

A SAFE HAVEN AN EVEN VIBRANT NEIGHBOURHOOD

A PEACEFUL PLACE TO RELAX A LIVING HUB TO SOCIALIZE

VALUE FOR MONEY OWNER'S PRIDE

It's the Best of Both worlds in one Super**CITY!**

